

FactSheet

The Cambridge Strategy Asian Markets Alpha Programme

January 2010

Firm Background:

The Cambridge Strategy (Asset Management) Limited is a boutique asset management company offering both active currency and emerging markets programmes. The firm offers three active currency programmes trading across both developed and developing markets. In addition, it also offers an active currency overlay programme. The Cambridge Strategy is owned by its three senior principals: Edward Baker (former CIO of Emerging Markets at AllianceBernstein); Russell Thompson (former Head Trader of Asian Markets at AIG Trading) and Peter Henricks (former CEO of Alliance Capital, Asia). Collectively, they have over 70 years experience in the investment management industry and bring a diverse and distinctive set of skills to the Cambridge Strategy. In 2007, the firm was nominated for currency manager of the year by Professional Pensions: Specialist and Alternative Investment Manager Awards.

Key professionals:

	Title	Previous Experience	Experience (yrs)
<i>Edward Baker</i>	Executive Chairman	CIO(EM), AllianceBernstein / BARRA Inc	30
<i>Peter Henricks</i>	CEO	CEO, Alliance Capital, Asia	27
<i>Russell Thompson</i>	CIO	Head of Trading, AIG Trading Inc, Asia	21
<i>Derek Doupe</i>	Director of Marketing	Director, Alternative Investments, Frank Russell	17
<i>Robert Colehan</i>	Senior PM	Portfolio Manager, UBS O'Connor	25
<i>Alexandra Edstein</i>	Senior PM	Senior Proprietary Trader, HSBC	25
<i>Andrew Bresler</i>	PM	AIS Europe Limited	5
<i>Jesse Marre</i>	Assistant PM	Oxford University	2
<i>Michael Kwong</i>	Assistant PM	Citigroup Global Markets	3
<i>Chris Udy</i>	Director of Research	Mount Row Capital	11
<i>Tony Henry</i>	Head of Operations	European COO, Balyasny Asset Management	29

Background to the Programme:

The Asian Markets Alpha Programme commenced trading in February 2006 as a managed account for an institutional client. Performance from February 2006 refers to an equal weighted average of the managed accounts invested via the Asian Markets Alpha Programme.

Investment Approach:

The Asian Markets Alpha Programme aims to profit from short and medium term moves in the Asian market currency pairs. To achieve this, the firm employs a systematic approach, designed to perform across diverse market environments. The process combines two types of trading strategies: a Systematic Technical Strategy and a Systematic Fundamental Strategy.

The Systematic Technical Strategy uses a series of proprietary trading algorithms operating over eight timeframes ranging from four-hourly timeframes to weekly. The algorithms combine trend continuation and trend reversal signals. The Systematic Fundamental Strategy reflects a predetermined set of positions designed to reflect 'market' views on the relative attractiveness of Asian currencies versus the US dollar. Assets are allocated to the Systematic Fundamental Strategy based on a proprietary measure of volatility in the global currency markets (in highly volatile markets the allocation is reduced and when volatility is low the allocation is increased).

The Cambridge Strategy believes that long run success is achieved through successful mitigation of downside returns (with risk controlled at the portfolio, strategy and individual trade levels). While a daily VAR limit is enforced at both the aggregate portfolio and sub-strategy level, a further layer of risk mitigation is incorporated within each separate strategy. For the Systematic Technical Strategy each trade is given a risk allocation based on our assessment of the appropriate Risk Adjusted Trade Size (RATS). The RATS is set weekly using a proprietary methodology and profit and loss levels are set for each position prior to trade execution to further limit downside risk. Within the Systematic Fundamental Strategy, the aggregate net US dollar exposure is maintained at zero.

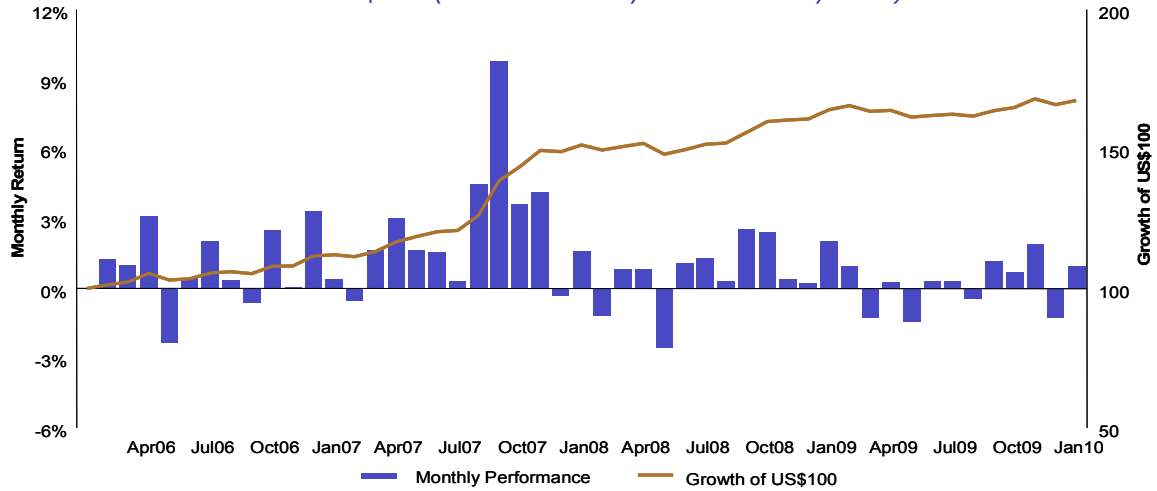
Programme Description:

Description:	Absolute Return – Currency – Asia
Target Returns:	18% per annum
Target Daily Volatility: ...	14% per annum (based on daily observations)
Investment Style:	Active Currency Management – Systematic (Technical and Fundamental)

Structural Details:

Vehicle:	Managed Account
Liquidity:	Determined by contract
Minimum Investment:	US\$ 10,000,000 (or equivalent)
Investment Manager:	The Cambridge Strategy (Asset Management) Limited
Management fees:	2.0% per annum
Performance fees:	20% performance fee with high-water mark

Monthly Performance & Growth of US\$100 (Period: February 2006 – January 2010)

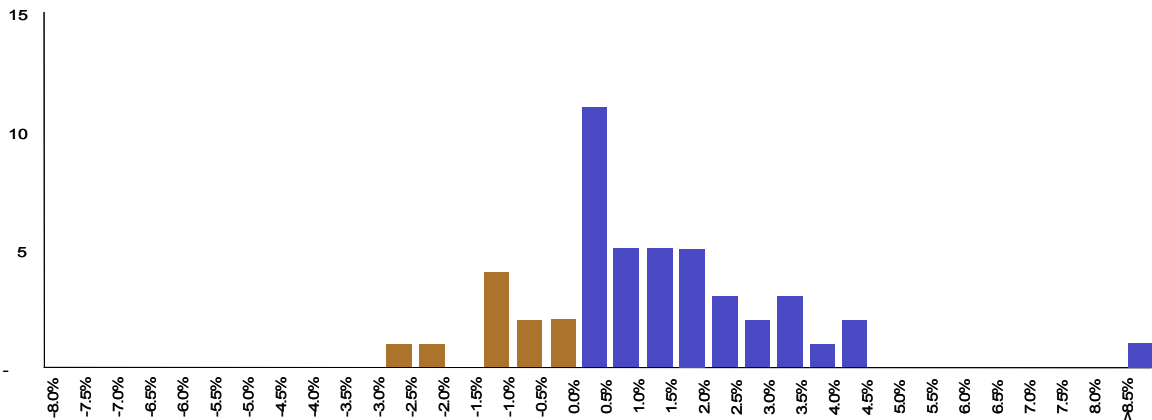


Summary Statistics (Period: February 2006 – January 2010)

Annualised Return (since inception)	13.8%	Annualised Risk (Standard Deviation)	7.0%
1 Year Rolling Return	2.1%	Sharpe Ratio	1.5
6 Months Rolling Return	3.1%	CS Character *	2.9
3 Month Rolling Return.....	1.6%	CS Ratio *	4.4
Year to Date	1.0%	Skewness.....	1.7
Months Positive (%)	79%	Kurtosis	6.5
Best Rolling 1 Year	38.5%	Worst Drawdown	-2.6%
Correlation to HFRI Weighted Composite Index.....	-0.1	Recovery from Drawdown	4 months

Distribution of Returns (Period: February 2006 – January 2010)

Frequency of Observation



Monthly Performance Data (%)

	Jan	Feb	Mar	Apr	May	Jun	Jul	Aug	Sep	Oct	Nov	Dec	YTD
2010	0.97												1.0
2009	2.02	0.94	-1.29	0.25	-1.47	0.33	0.33	-0.44	1.18	0.68	1.91	-1.25	3.2
2008	1.58	-1.18	0.82	0.83	-2.57	1.08	1.27	0.30	2.55	2.44	0.41	0.21	7.9
2007	0.40	-0.53	1.63	3.04	1.61	1.55	0.33	4.48	9.81	3.61	4.14	-0.33	33.6
2006		1.24	1.01	3.13	-2.33	0.42	2.05	0.37	-0.61	2.51	0.06	3.30	11.6

Contact Details:

Derek Doupe Tel: +44 20 7659 9840 Email: derek.doupe@thecambridgestrategy.com
 Peta Adams Tel: +44 20 7659 9841 Email: peta.adams@thecambridgestrategy.com

Notes on performance: The performance data quoted relates to the equal weighted average of the managed accounts invested via the Asian Alpha Currency Programme (US\$ performance, Gross of all fees, excluding any interest income). Source: The Cambridge Strategy (Asset Management) Limited. The risk free rate and minimum acceptable rate of return is US\$ LIBOR (1 month). Returns and statistics are calculated on the basis of monthly returns. Inception: February 2006.

* For further information on the CS Character and Ratio; please refer to "The Standard Dispersion and Its Application to Risk Analysis for Portfolio Management," Ana Cascon, Ph.D., and William F. Shadwick, Ph.D. <http://www.imca.org/main/do/Journal-Vol8No2>.

Disclaimer: This material has been approved by The Cambridge Strategy (Asset Management) Limited (Address: Berger House, 36-38 Berkeley Square, W1J 5AE, London, United Kingdom). Some services are not available to private inexperienced investors. Services may also not be available to certain investors due to regulatory or other constraints either in the UK or elsewhere. The information contained herein is not targeted at the residents of any particular country and is not intended for distribution to, or use by, any person in any country or jurisdiction where such distribution or use would be contrary to local law or regulatory requirements. Information contained herein may be subject to change without notice. Investments in securities of financial instruments (which include contracts for differences, futures, options spot and forward foreign exchange and off-exchange contracts) can fluctuate in value and you should be aware that you may not realise the initial amount invested and may incur additional liabilities. As investments in securities or financial instruments may entail above average risks you should carefully consider whether your financial circumstances permit you to invest and if necessary seek the advice of an independent financial adviser. Foreign exchange denominated securities and financial instruments are subject to fluctuations in exchange rates that may have a positive or negative effect on their value, price or income derived from the securities or financial instrument concerned. Past performance should not be taken as a guide to future performance. You are advised that The Cambridge Strategy (Asset Management) Limited is unable to provide advice as to tax consequences of a particular investment or investment strategy and you are advised to seek professional advice in this respect. This document is not a solicitation or instruction to invest. It is provided for information purposes only.

The Cambridge Strategy (Asset Management) Limited is authorised and regulated by the Financial Services Authority (UK).